

Single-Stage Screw Compressor packages



A product of

Grasso GmbH Refrigeration Technology, Germany

Exclusively marketed and serviced in India by.....



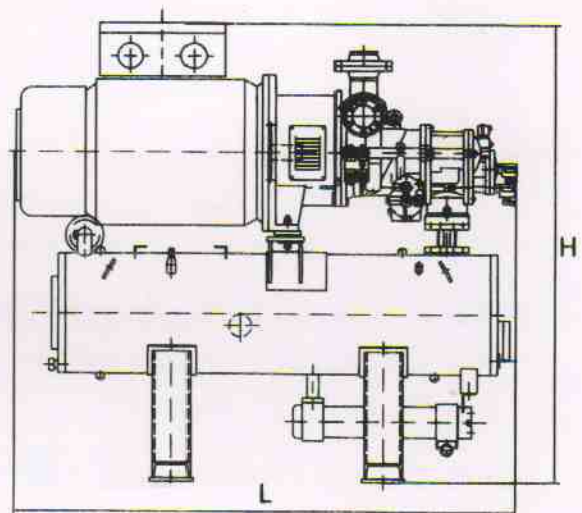
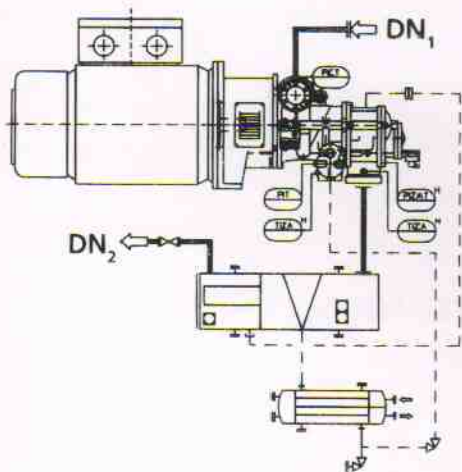
IDMC
L I M I T E D

providing the complete range of refrigeration
systems under one roof

SMALL SERIES

SMALL SERIES with swept volumes ranging from 231 to 372 m³/hr (136 to 219 CFM)

Grasso screw compressor packages in the SMALL series have a horizontal oil separator, which also forms part of the support frame. The use of SemiPack screw compressors follows a particularly simple, compact and space-saving construction. Compressor packages in the SMALL series require only a few components and connecting elements since the oil pump, suction non-return valve, suction filter, oil filter, overflow valve, internal oil management system, coupling and coupling casting with centering flange for flange motors and the solenoid valves for output and Vi adjustment are integrated into SemiPacks



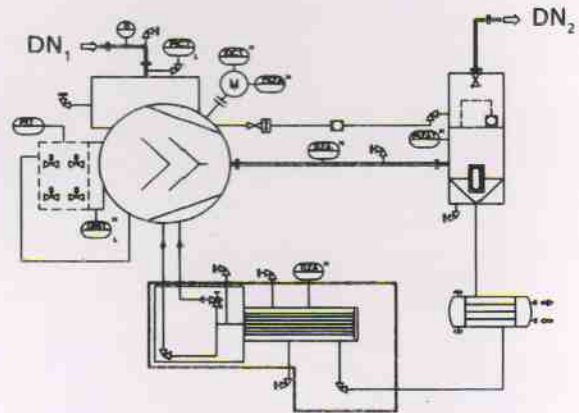
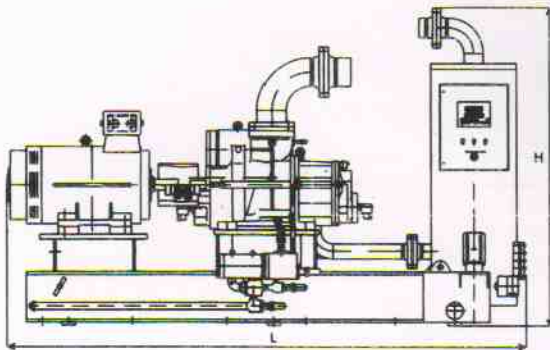
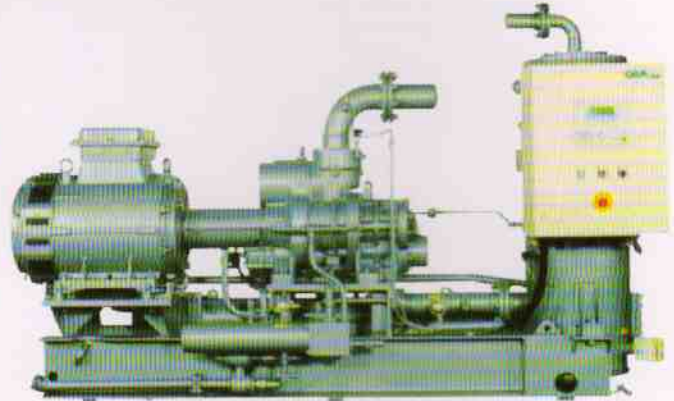
SP Type	Installed Power (kW)	Dimensions (mm)			DN ₁ (mm)		DN ₂ (mm)		Weight* (kg)
		L	W	H	NH ₃	R22	NH ₃	R22	
CA, CH	15-75	1960	960	1745	65	80	40	65	870
DA, DH	18.5-90	1960	960	1745	65	80	40	65	880
EA, EH	30-90	1960	960	1775	80	100	50	65	985
GA, GH	45-132	1960	960	1775	80	100	50	65	1000

L-Length; W-Width; H-Height; DN₁-Suction connection; DN₂-Discharge connection; * without motor

MEDIUM SERIES

MEDIUM SERIES with swept volumes ranging from 471 to 860 m³/hr (277 to 506 CFM)

Grasso screw compressor packages in the MEDIUM series have a separate base frame to accommodate all the components and are characterized by a vertical oil separator. Their robust construction ensures particularly low noise and low vibration when running. The small number of components and connecting elements on the package is achieved by the integration of the oil-pump, suction non-return valve, suction filter, internal oil distribution system. Solenoid valves are used for output or Vi adjustment in this compact screw compressor.



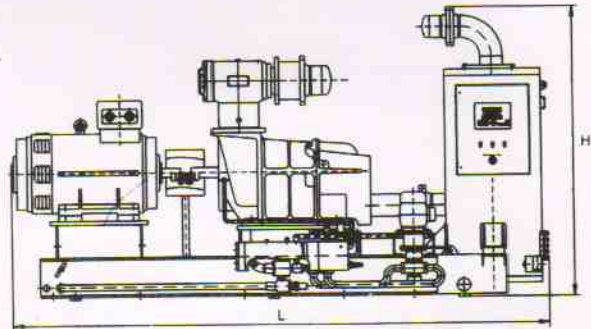
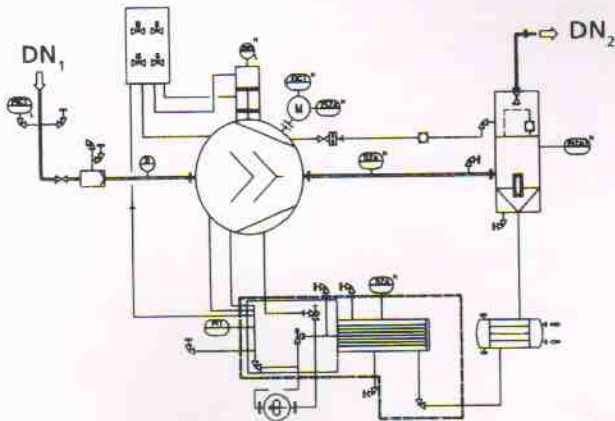
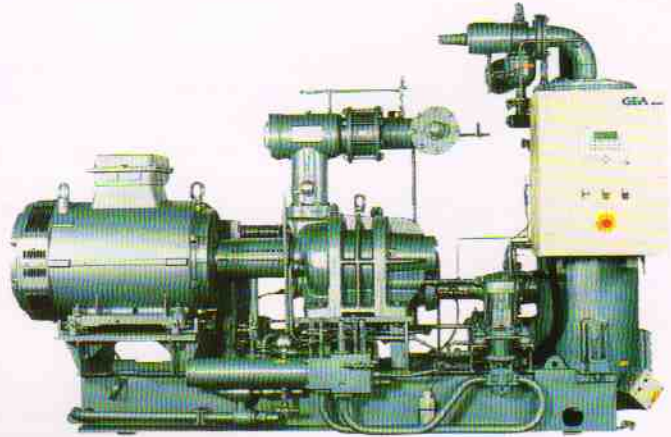
SP Type	Installed Power (kW)	Dimensions (mm)			DN ₁ (mm)		DN ₂ (mm)		Weight* (kg)
		L	W	H	NH ₃	R22	NH ₃	R22	
HB, HK	37-160	2320-2860	1090	1890	100	125	50	80	1700
LB, LK	45-160	2320-2860	1090	1890	100	125	50	80	1800
MB, MK	55-250	2930-3260	1170	1890	125	150	65	100	2400
NB, NK	55-250	2930-3260	1170	1890	125	150	65	100	2500

L-Length; W-Width; H-Height; DN₁-Suction connection; DN₂-Discharge connection; * without motor

LARGE SERIES

LARGE SERIES with swept volumes ranging from 805 to 5800 m³/hr (474 to 3435 CFM)

Grasso screw compressor packages in the LARGE series have a separate base frame to accommodate all the components and are characterized by a vertical oil separator. Their robust construction and the use of tried-and-tested LT screw compressors ensures particularly low noise and low vibration when running and an extraordinarily long service life.



SP Type	Installed Power (kW)	Dimensions (mm)			DN ₁ (mm)		DN ₂ (mm)		Weight* (kg)
		L	W	H	NH ₃	R22	NH ₃	R22	
PB, PK	55-250	2880-3233	1170	2010	125	150	65	100	2400
RB, RK	55-355	3310-3626	1370	2040	125	150	80	125	2850
SB, SK	75-400	3310-3626	1370	2040	150	200	100	125	2950
VB, VK	110-550	3370-4098	1470	2100	150	250	100	150	3650
YB, YK	132-630	3490-4218	1470	2150	200	300	125	200	3800
ZB, ZK	160-750	3665-4393	1470	2200	200	300	150	250	4000
Xa-B, Xa-K	200-900	4050-4900	1870	2200	250	350	150	250	4600
Xb-B, Xb-K	250-1200	6700	2200	3000	300	400	<or=200	<or=250	7500
Xc-B, Xc-K	315-1500	7200	2400	3600	300	400	<or=200	<or=300	8500
Xd-B, Xd-K	355-1800	7800	2600	4200	350	450	<or=200	<or=300	9500

L-Length; W-Width; H-Height; DN₁-Suction connection; DN₂-Discharge connection; * without motor

